

Development solution automatic controller METIS - 7000

K₂CO₃

Features

- Metis-7000 K₂CO₃ is a development solution automatic controller. It can analyze potassium carbonate (K₂CO₃) concentration which is active component of process solution used at production line of printed wiring boards and replenish (output signals for replenishment) supply solution automatically.
- Can also calculate the amounts of dissolved dry film resist and liquid photosensitive solder resist at advisory level which are increased by progress of processing.* It helps you to know the timing of renewing the process solution. (*It needs consultation. Please contact our sales staff for detail.)
- Can maintain high analysis accuracy by washing sensors every after analysis cycle ends.
- Can perform the optimum control of analysis and replenishment by simple parameter change.
- Easy to integrate into specification of production line.
- Contribute to cost down by reducing amounts of use of process solution and labor costs for analysis and replenishment.

Specification

■Function

Control items/ analysis method	1. pH value / grass electrode method 2. K ₂ CO ₃ concentration / neutralization titration (analysis accuracy ±2.0%) 3. Resist dissolution / neutralization titration (※accuracy of resist concentration is at advisory level .)
Replenishing	Controlling replenishing pumps from analysis result. ※Replenishing system needs mutual consultation about conditions at processing line.
Cycle time	About 15 minutes

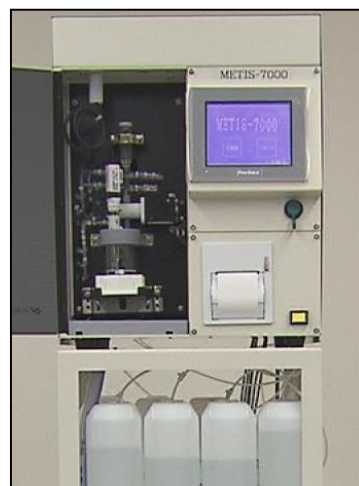


Image picture

■Specification

Dimension / Weight (body)	W385 × H470 × D455(mm) / 30kg
Dimension / Weight (Footstool)	W465 × H930 × D425(mm) / 20kg
Power supply	AC100V (±10%)、60/50Hz、3P Plug+ Ground (separated ground line needed for equipped computer)
Power dissipation	200VA(max)

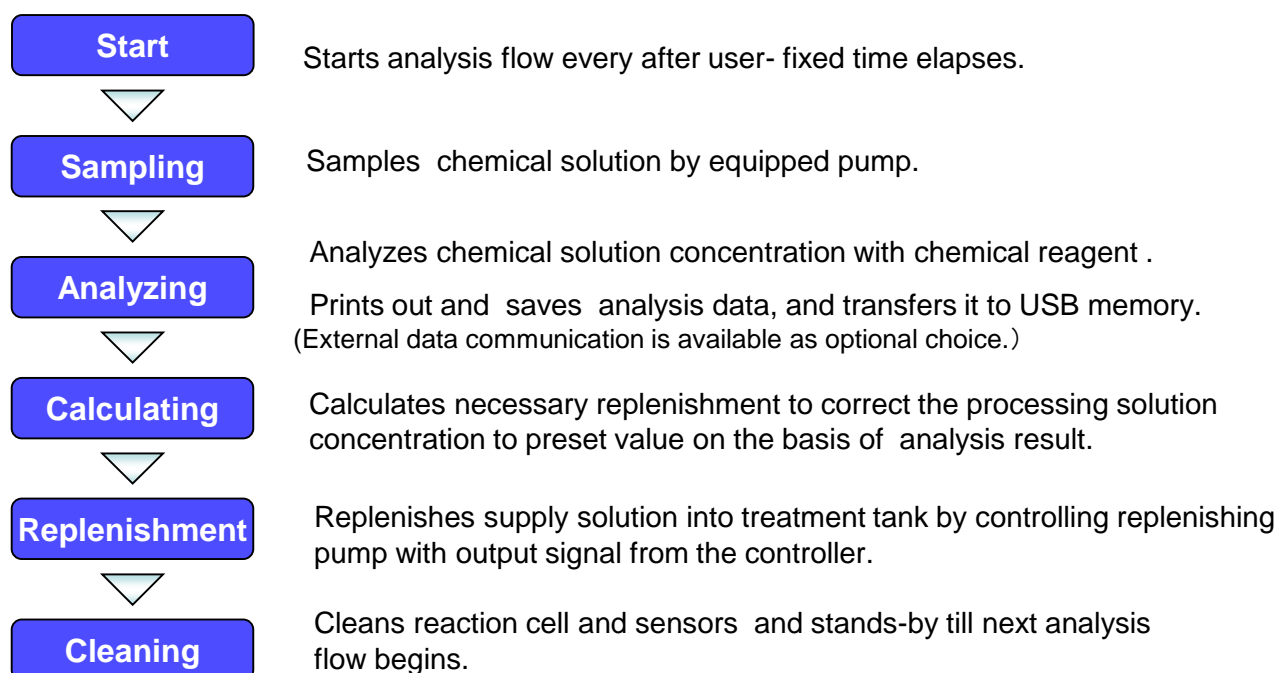
■Option (Below is just some example for your consideration. If you have requests, please feel free to contact us)

Alarm	Patrol light, various signal towers.
Data communication	CC-Link、RS-232C、RS-485、4-20mA communication、external control, etc.

System summary



Automatically analysis flow



Note1) Please use our designated genuine parts or reagents for maintenance and running in order to prevent unexpected troubles.

Note2) Please be notified that we may change the specification or appearance of the controller for improvement without notice.

Note3) So as to maintain analysis accuracy, we recommend periodical maintenance or adjustment by our skilled engineer.
(out of warranty)

For inquiry contact



ISHIHARA CHEMICAL CO., LTD.

Head Office	5-26 Nishiyanagiwara-cho, Hyogo-ku, Kobe-shi, Hyogo 652-0806, Japan	Phone+81-78-682-2307(Direct)
Tokyo Branch	2-26-11 Taito, Taito-ku, Tokyo 110-0016, Japan	Phone+81-3-3832-8037(Direct)